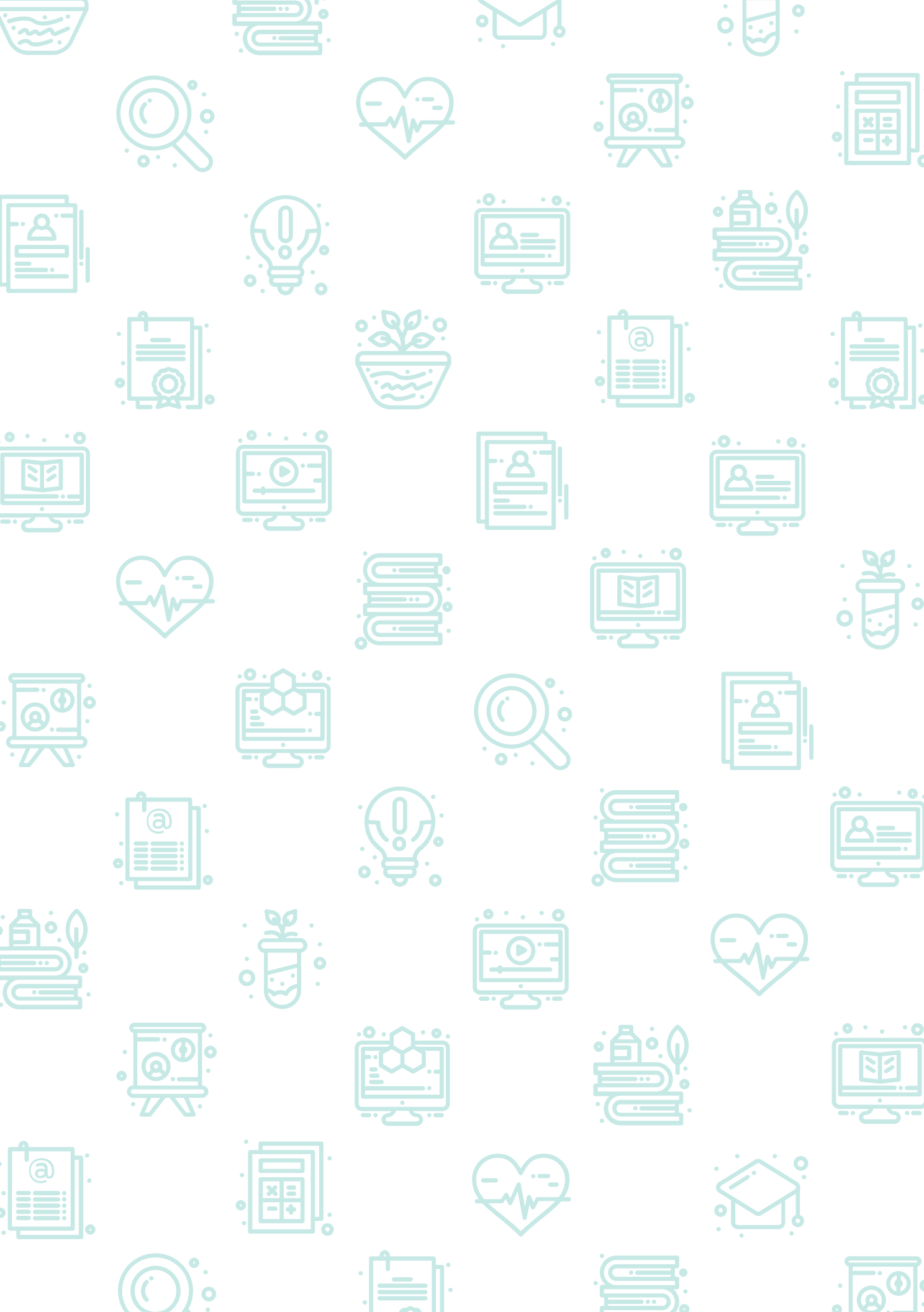


**Programs  
at a Glance**





# Contents

BUSINESS AND MANAGEMENT .....	4
HEALTH SCIENCES .....	5
HUMAN SERVICES.....	7
TECHNOLOGIES .....	7
TRADES CERTIFICATES.....	8
UNIVERSITY CREDIT COURSES .....	9
IMPORTANT NOTES.....	10

## BUSINESS AND MANAGEMENT

Program	Length	Start Date	What do I need?
Applied Business Technology (ABT) Administrative Assistant Certificate	34 weeks	August	<ul style="list-style-type: none"> <li>High school graduation, or equivalent</li> <li>English Studies 12, or English First Peoples 12, (minimum "C-") or equivalent</li> <li>Mathematics 11 (minimum "C-"), or equivalent</li> <li>20 NWP Typing Assessment</li> <li>SRA*</li> </ul>
Accounting and Finance Diploma	2 years	September and January	<ul style="list-style-type: none"> <li>High school graduation, or equivalent</li> <li>English Studies 12, or English First Peoples 12 (minimum "C-"), or equivalent</li> <li>Foundations of Mathematics 11 (minimum "C"), or equivalent</li> </ul>
Bookkeeping Certificate (online)	1 year	September and January	<ul style="list-style-type: none"> <li>Mathematics 10, or Accounting 11, or equivalent.</li> <li>Communications 11, or equivalent</li> <li>SRA*</li> </ul>
Business Management Certificate and Diploma	1 year Certificate 2 year Diploma	September, January and May	<ul style="list-style-type: none"> <li>High school graduation, or equivalent</li> <li>Communications 12 (minimum "C-"), or equivalent</li> <li>Note: Foundations of Mathematics 11 is a pre-requisite for several business courses in the diploma.</li> </ul>
Medical Office Assistant Associate Certificate (online)	Varies	January	<ul style="list-style-type: none"> <li>High school graduation, or equivalent</li> <li>English Studies 12, or English First Peoples 12 (minimum "C"), or equivalent</li> <li>35 NWPM Typing Assessment</li> <li>SRA*</li> </ul>
ABT Online Office Clerk	17 weeks	September and January	<ul style="list-style-type: none"> <li>High school graduation, or equivalent</li> <li>English Studies 12, or English First Peoples 12 (minimum "C-"), or equivalent</li> <li>Mathematics 11 (minimum "C-"), or equivalent</li> <li>20 NWPM Typing Assessment</li> <li>SRA*</li> </ul>
ABT Online Office Assistant Certificate	17 weeks	September and January	<ul style="list-style-type: none"> <li>Office Clerk Certificate, or equivalent – completed within the last 5 years</li> <li>40 NWPM Typing Assessment</li> </ul>
Post Baccalaureate in Accounting Diploma	2 years	September	<ul style="list-style-type: none"> <li>English Studies 12 or English First Peoples 12 (minimum "C") or equivalent</li> <li>Foundations of Mathematics 11 (minimum "C")</li> <li>Recognized bachelor's degree.</li> </ul>
Post-Diploma in Human Resources Management	2 years	September, January and May	<ul style="list-style-type: none"> <li>Two-year diploma from a recognized post-secondary institution, or equivalent.</li> </ul>
Post-Diploma in Tourism and Hotel Management	2 years	September and January	<ul style="list-style-type: none"> <li>Two-year diploma from a recognized post-secondary institution, or equivalent (60 credits).</li> </ul>

## HEALTH SCIENCES

Program	Length	Start Date	What do I need?
Dental Assisting Certificate	1 year	September	<ul style="list-style-type: none"> <li>• High school graduation, or equivalent.</li> <li>• The following courses, each with a letter grade of "C+" or higher:               <ul style="list-style-type: none"> <li>› Anatomy &amp; Physiology 12, or equivalent</li> <li>› English Studies 12, or English First Peoples 12, or equivalent</li> </ul> </li> </ul>
Dental Hygiene Diploma	2 years	September	<ul style="list-style-type: none"> <li>• The following courses or their equivalents, with an average GPA of 3.0 ("B") with no grade lower than a "C":               <ul style="list-style-type: none"> <li>› 6 credits of first year Biology (Anatomy and Physiology), must include labs</li> <li>› 6 credits of first year Chemistry, must include labs</li> <li>› 6 credits of first or second year English</li> <li>› 6 credits of first or second year Psychology</li> <li>› 3 credits of first or second year Statistics</li> <li>› 3 credits of first or second year elective</li> </ul> </li> </ul>
Dental Hygiene Pathway Certificate	1 year	September and January 2.5 yrs	<ul style="list-style-type: none"> <li>• A minimum "C" grade in the following courses:               <ul style="list-style-type: none"> <li>› Anatomy and Physiology 12, or equivalent</li> <li>› Chemistry 11, or equivalent</li> <li>› English Studies 12, or English First Peoples 12, or equivalent</li> <li>› Foundations of Mathematics 11, or equivalent</li> </ul> </li> </ul>
Diagnostic Medical Sonography Diploma	2 years	September	<ul style="list-style-type: none"> <li>• High school graduation, or equivalent</li> <li>• A minimum "B" grade in the following courses:               <ul style="list-style-type: none"> <li>› English Studies 12, or English First Peoples 12, or equivalent;</li> <li>› Foundations of Mathematics 12 or equivalent;</li> <li>› Physics 12 or equivalent;</li> <li>› Anatomy &amp; Physiology 12, or equivalent</li> </ul> </li> </ul>
Health Care Assistant Certificate	35 weeks	August and January	<ul style="list-style-type: none"> <li>• A minimum "C" grade in the following courses:               <ul style="list-style-type: none"> <li>› English Language Arts 10, or equivalent</li> <li>› Workplace Mathematics 10, or equivalent</li> </ul> </li> <li>• SRA*</li> </ul>
Medical Device Reprocessing Technician Associate Certificate	15 weeks	Varies	<ul style="list-style-type: none"> <li>• A minimum "C" grade in the following courses:               <ul style="list-style-type: none"> <li>› English Language Arts 10, or equivalent</li> <li>› Workplace Mathematics 10, or equivalent</li> </ul> </li> <li>• SRA*</li> </ul>
Medical Laboratory Technology Science Diploma	2.5 years	January	<ul style="list-style-type: none"> <li>• High school graduation or equivalent</li> <li>• The following courses, completed with an average GPA of 3.0 ("B") with no grade lower than a "C":               <ul style="list-style-type: none"> <li>› Anatomy and Physiology 12, or equivalent</li> <li>› Chemistry 12 or equivalent</li> <li>› English Studies 12, or English First Peoples 12, or equivalent</li> <li>› Foundations of Mathematics 12, or equivalent</li> </ul> </li> </ul>

<b>Medical Radiography Technology Diploma</b>	2 years	September	<ul style="list-style-type: none"> <li>• High school graduation, or equivalent</li> <li>• The following courses, completed with an average GPA of 3.0 ("B") with no grade lower than a "C+": <ul style="list-style-type: none"> <li>› Anatomy and Physiology 12, or equivalent</li> <li>› English Studies 12, English First Peoples 12, or equivalent</li> <li>› Foundations of Mathematics 12, or equivalent</li> <li>› Physics 12, or equivalent</li> </ul> </li> </ul>
<b>Medical Sciences Diploma – Dental Pathway</b>	2 years	September and January	<ul style="list-style-type: none"> <li>• High school graduation, or equivalent</li> <li>• A minimum "C" grade in the following courses: <ul style="list-style-type: none"> <li>› Life Sciences 11, or equivalent</li> <li>› Chemistry 11, or equivalent</li> <li>› English Studies 12, or English First Peoples 12, or equivalent</li> <li>› Foundations of Mathematics 11, or equivalent</li> </ul> </li> </ul>
<b>Medical Sciences Diploma – Medical Pathway</b>	2 years	September and January 2.5 yrs	<ul style="list-style-type: none"> <li>• High school graduation, or equivalent</li> <li>• A minimum standing of "C" grade in the following courses: <ul style="list-style-type: none"> <li>› Life Sciences 11, or equivalent</li> <li>› Chemistry 11, or equivalent</li> <li>› English Studies 12, or English First Peoples 12, or equivalent</li> <li>› Foundations of Mathematics 11, or equivalent</li> <li>› Physics 11, or equivalent</li> </ul> </li> </ul>
<b>Medical Sciences Diploma – Pharmacy Pathway</b>	2 years	September and January	<ul style="list-style-type: none"> <li>• High school graduation, or equivalent</li> <li>• A minimum "C" grade in the following courses: <ul style="list-style-type: none"> <li>› Life Sciences 11, or equivalent</li> <li>› Chemistry 11, or equivalent</li> <li>› English Studies 12, or English First Peoples 12, or equivalent</li> <li>› Pre-Calculus 12, or equivalent</li> </ul> </li> </ul>
<b>Medical Sciences Diploma – Veterinary Pathway</b>	2 years	September and January 2.5 yrs	<ul style="list-style-type: none"> <li>• High school graduation, or equivalent</li> <li>• A minimum standing of "C" grade in the following courses: <ul style="list-style-type: none"> <li>› Life Sciences 11, or equivalent</li> <li>› Chemistry 11, or equivalent</li> <li>› English Studies 12, or English First Peoples 12, or equivalent</li> <li>› Foundations of Mathematics 11, or equivalent</li> <li>› Physics 11, or equivalent</li> </ul> </li> </ul>
<b>Nursing, Bachelor of Science in Nursing</b>	2 years CNC 2 years UNBC	September and January 2.5 yrs	<ul style="list-style-type: none"> <li>• UNBC admission requirements</li> <li>• Anatomy and Physiology 12 (minimum 73%) or equivalent within five years</li> <li>• The following courses with a minimum 70% each: <ul style="list-style-type: none"> <li>› Foundations of Mathematics 11, or equivalent</li> <li>› Chemistry 11, or equivalent</li> <li>› English Studies 12, or English First Peoples 12, or equivalent</li> </ul> </li> </ul>
<b>Nursing Pathway Certificate</b>	1 year	September and January 2.5 yrs	<ul style="list-style-type: none"> <li>• Anatomy and Physiology 12, or equivalent (minimum 73%)</li> <li>• Chemistry 11, or equivalent (minimum 70%)</li> <li>• English Studies 12, or English First Peoples 12, or equivalent (minimum 70%)</li> <li>• Foundations of Mathematics 11, or equivalent (minimum 70%)</li> </ul> <p>*Anatomy and Physiology 12 or equivalent must be completed within five (5) years prior to the semester of admission to the NCBNP.</p>

Nursing Unit Assistant Certificate (online)	1 year	September	<ul style="list-style-type: none"> <li>• High school graduation, or equivalent</li> <li>• English Studies 12, or English First Peoples 12 (minimum "C"), or equivalent</li> <li>• 35 NWPM Typing Assessment</li> <li>• SRA*</li> </ul>
Physical Therapy Bridging Certificate	1 year	September	<ul style="list-style-type: none"> <li>• A minimum "C" grade in the following courses: <ul style="list-style-type: none"> <li>› Anatomy and Physiology 12 or equivalent</li> <li>› Chemistry 12 or equivalent</li> <li>› English Studies 12 or English Studies First Peoples 12 or equivalent</li> <li>› Foundations of Math 11 or equivalent</li> <li>› Physics 11 or equivalent</li> </ul> </li> </ul>
Practical Nurse Diploma	2 years	September	<ul style="list-style-type: none"> <li>• High school graduation, or equivalent</li> <li>• A minimum "C+" grade in the following courses: <ul style="list-style-type: none"> <li>› English Studies 12, or English First Peoples 12, or equivalent</li> <li>› Foundations of Mathematics 11, or equivalent</li> </ul> </li> <li>• BIO 130 (minimum "B-"), or equivalent</li> </ul>

## HUMAN SERVICES

Program	Length	Start Date	What do I need?
Community Support Worker Certificate	1.5 years	September and January	<ul style="list-style-type: none"> <li>• English Studies 12, or English First Peoples 12 (minimum "C"), or equivalent</li> <li>• SRA*</li> </ul>
Early Childhood Care and Learning Certificate (online) and Diploma	1.5 years Certificate 2 year Diploma	September and January	<ul style="list-style-type: none"> <li>• High school graduation, or equivalent.</li> <li>• English Studies 12, or English First Peoples 12 (minimum "C"), or equivalent</li> <li>• SRA*</li> </ul>
Education Assistant Certificate (online)	1 year	September and January	<ul style="list-style-type: none"> <li>• English Studies 12, or English First Peoples 12 (minimum "C"), or equivalent</li> <li>• SRA*</li> </ul>
Social Service Worker Certificate, Applied Diploma and UT Diploma	1 year 2 years 2 years	September	<ul style="list-style-type: none"> <li>• High school graduation, or equivalent</li> <li>• English Studies 12, or English First Peoples 12 (minimum "C"), or equivalent</li> <li>• Completion of application package</li> <li>• SRA*</li> </ul>

## TECHNOLOGIES

Program	Length	Start Date	What do I need?
Civil Engineering Technology Diploma	2 years	September	<ul style="list-style-type: none"> <li>• High school graduation, or equivalent</li> <li>• English Studies 12, or English First Peoples 12 (minimum "C"), or equivalent</li> <li>• Foundations of Mathematics 12, (minimum "C+"), or equivalent</li> <li>• Physics 11 (minimum "B"), or Physics 12 (minimum "C"), or equivalent</li> <li>• Chemistry 11 (minimum "C"), or equivalent</li> </ul>
Information Technology and Networking Certificate and Diploma	1 year 2 years	September	<ul style="list-style-type: none"> <li>• High school graduation or equivalent.</li> <li>• A minimum "C-" grade in the following courses: <ul style="list-style-type: none"> <li>› English Studies 12, or English First Peoples 12 or equivalent</li> <li>› Foundations of Mathematics 11, or equivalent</li> </ul> </li> </ul>

Natural Resources and Forest Technology Diploma	2 years	September	<ul style="list-style-type: none"> <li>• High school graduation, or equivalent</li> <li>• A minimum "C" grade in the following courses: <ul style="list-style-type: none"> <li>› English Studies 12, or English First Peoples 12, or equivalent</li> <li>› Foundations of Mathematics 11</li> </ul> </li> <li>• One of the courses listed below, or equivalent: <ul style="list-style-type: none"> <li>› Chemistry 11</li> <li>› Life Sciences 11</li> <li>› Physics 11</li> </ul> </li> </ul>
---	---------	-----------	--

## TRADES CERTIFICATES

Program	Length	Start Date	What do I need?
Automotive Collision and Refinishing	34 weeks	September	<ul style="list-style-type: none"> <li>• A minimum "C" grade in the following courses: <ul style="list-style-type: none"> <li>› English Language Arts 10, or equivalent</li> <li>› Workplace Mathematics 10, or equivalent</li> </ul> </li> <li>• SRA*</li> </ul>
Automotive Service Technician (Harmonized)	30 weeks	September Morning or Afternoon	<ul style="list-style-type: none"> <li>• English Language Arts 10, or equivalent</li> <li>• Foundations of Mathematics (minimum "C") and Pre – Calculus 10 (minimum "C"), or equivalent</li> <li>• SRA*</li> </ul>
Carpenter Foundation Program (Harmonized)	24 weeks	August and February	<ul style="list-style-type: none"> <li>• A minimum "C" grade in the following courses: <ul style="list-style-type: none"> <li>› English Language Arts 10, or equivalent</li> <li>› Foundation of Mathematics and Pre - Calculus 10</li> </ul> </li> <li>• SRA*</li> </ul>
Electrical Foundation (Harmonized)	24 weeks	August and February	<ul style="list-style-type: none"> <li>• English Language Arts 11, (minimum "C"), or equivalent</li> <li>• Foundations of Mathematics 11 (minimum "C-"), or equivalent</li> <li>• Physics 11, (minimum "C-") or equivalent</li> <li>• SRA*</li> </ul>
Heavy Mechanical Trades Foundation	36 weeks	September or October	<ul style="list-style-type: none"> <li>• A minimum "C" grade in the following courses: <ul style="list-style-type: none"> <li>› English Language Arts 10, or equivalent</li> <li>› Workplace Math 11 or equivalent</li> </ul> </li> <li>• SRA*</li> </ul>
Industrial Mechanic (Millwright) / Machinist Foundation	24 weeks	September	<ul style="list-style-type: none"> <li>• English Language Arts 10, or equivalent</li> <li>• Foundations of Mathematics and Pre-Calculus 10 (minimum "C"), or equivalent</li> <li>• SRA*</li> </ul>
Pipe Trades Foundation (Harmonized)	21 weeks	August	<ul style="list-style-type: none"> <li>• A minimum "C" grade in the following courses: <ul style="list-style-type: none"> <li>› English Language Arts 10, or equivalent</li> <li>› Workplace Mathematics 11, or equivalent</li> </ul> </li> <li>• SRA*</li> </ul>
PowerEngineering: 3rd Class Certificate	30 weeks	September	<ul style="list-style-type: none"> <li>• Power Engineering, 4th Class Certificate</li> </ul>



<b>PowerEngineering: 4th Class Certificate</b>	40 weeks	August	<ul style="list-style-type: none"> <li>• High school graduation or equivalent</li> <li>• A minimum "C" grade in the following courses: <ul style="list-style-type: none"> <li>› English Language Arts 11 or equivalent</li> <li>› Foundations of Mathematics 11, or equivalent</li> <li>› Physics 11, or equivalent</li> </ul> </li> <li>• SRA*</li> </ul>
<b>Professional Cook (level 1 &amp; 2)</b> <i>Levels 1 and 2 are taken consecutively</i>	Level 1 28 weeks Level 2 14 weeks	August Level 1 March Level 2	<ul style="list-style-type: none"> <li>• A minimum "C" grade in the following courses: <ul style="list-style-type: none"> <li>› English Language Arts 10, or equivalent</li> <li>› Workplace Mathematics 10, or equivalent</li> </ul> </li> <li>• SRA*</li> </ul>
<b>Welder Foundation Program (Harmonized)</b> <i>After successful completion, students finish this program with both levels 1 and 2.</i>	28 weeks	September and October	<ul style="list-style-type: none"> <li>• A minimum "C" grade in the following courses: <ul style="list-style-type: none"> <li>› English Language Arts 10, or equivalent</li> <li>› Workplace Mathematics 10, or equivalent</li> </ul> </li> <li>• SRA*</li> </ul>
<b>Trades Discovery Program</b>	Vaires	Varies	<ul style="list-style-type: none"> <li>• English Language Arts 9, or equivalent</li> <li>• Mathematics 9, or equivalent</li> </ul>

## UNIVERSITY CREDIT COURSES

Program	Length	Start Date	What do I need?
<b>Aboriginal Studies Certificate</b>	1 year	September, January and May	<ul style="list-style-type: none"> <li>• High school graduation, or equivalent</li> <li>• English Studies 12, or English First Peoples 12 (minimum "C-"), or equivalent</li> </ul>
<b>Associate Degrees -</b> <ul style="list-style-type: none"> <li>• Aboriginal Studies</li> <li>• Anthropology</li> <li>• Biology</li> <li>• Chemistry</li> <li>• Mathematics &amp; Computer Science</li> <li>• English</li> <li>• Modern Classics</li> <li>• Psychology</li> <li>• Sociology</li> </ul>	2 years	September, January and May	<ul style="list-style-type: none"> <li>• High school graduation, or equivalent</li> <li>• English Studies 12, or English First Peoples 12 (minimum "C-"), or equivalent</li> </ul>
<b>Criminology Diploma</b>	2 years	September and January	<ul style="list-style-type: none"> <li>• High school graduation, or equivalent</li> <li>• English Studies 12, or English First Peoples 12 (minimum "C-"), or equivalent</li> <li>• Foundations of Mathematics 11 (minimum "C"), or equivalent</li> </ul>
<b>Engineering Certificate</b>	1 year	September	<ul style="list-style-type: none"> <li>• High school graduation, or equivalent</li> <li>• A minimum "C" grade in the following courses: <ul style="list-style-type: none"> <li>› English Studies 12, or English First Peoples 12, or equivalent</li> <li>› Chemistry 12, or equivalent</li> <li>› Pre-calculus 12, or equivalent</li> <li>› Physics 12, or equivalent</li> </ul> </li> </ul>
<b>Fine Arts Certificate</b>	1 year	September and January	<ul style="list-style-type: none"> <li>• High school graduation, or equivalent</li> <li>• English Studies 12, or English First Peoples 12 (minimum "C"), or equivalent</li> </ul>
<b>Kinesiology Diploma</b>	2 years	September	<ul style="list-style-type: none"> <li>• High school graduation, or equivalent</li> <li>• English Studies 12, or English First Peoples 12 (minimum "C"), or equivalent</li> </ul>

<b>Web and Graphic Design Certificate and Diploma</b>	1.5 years Certificate 2 year Diploma	September and January	<ul style="list-style-type: none"> <li>• High school graduation, or equivalent.</li> <li>• English Studies 12, or English First Peoples 12 (minimum "C"), or equivalent.</li> </ul>
---	---	-----------------------	---

## AND WE ARE NOT DONE YET...

Program	Length	Start Date	What do I need?
<b>Academic Upgrading</b>	Varies	September and January	<ul style="list-style-type: none"> <li>• Must be at least 18 years old; an assessment may be required</li> </ul>
<b>Access Program</b> <ul style="list-style-type: none"> <li>• Accounting &amp; Finance</li> <li>• Associate of Arts Degree (various)</li> <li>• Associate of Science Degree (various)</li> <li>• Business Management</li> <li>• Civil Engineering Technology</li> <li>• Criminology</li> <li>• Dental Programs</li> <li>• Early Childhood Care and Learning</li> <li>• Fine Arts</li> <li>• Natural Resources and Forestry Technology</li> <li>• Practical Nurse</li> <li>• Social Service Worker</li> </ul>	4-8 months	September	<ul style="list-style-type: none"> <li>• English Language Arts 11, or equivalent</li> <li>• Foundations of Mathematics and Precalculus 10 (minimum "B"), or equivalent</li> </ul>
<b>English Language Training (ENLA)</b>	15-weeks	September, January and May	<ul style="list-style-type: none"> <li>• Must be at least 17 years of age, and turn 18 during the first semester; assessment test / interview. See website for more details.</li> </ul>
<b>Job Education Training (JET)/ TARGET</b>	9 months	September	<ul style="list-style-type: none"> <li>• Must be at least 17 years of age; interview process</li> </ul>

## IMPORTANT NOTES

Communications 12 is not equivalent to ENGL 12.

Some programs may require an English Language Proficiency Assessment.

\*SRA: The Student Readiness Assessment may be used to meet the English and Math requirements.

If English is not your primary language, check the CNC English Language Requirements <https://cnc.bc.ca/admissions/transfer/international-equivalencies>.



**SCAN QR TO  
LEARN MORE  
ABOUT THE SRA**



# Learning together, changing lives, creating futures.

**lhulh whuts'odutel'eh** (we will learn together),  
**lhk'enazdulkat** (we change ourselves),  
**nus 'uztelelh** (we will create the future).

## College of New Caledonia

3330 22nd Avenue, Prince George,  
British Columbia, Canada, V2N 1P8

Phone: 1 250 562 2131  
Fax: 1 250 561 5861

