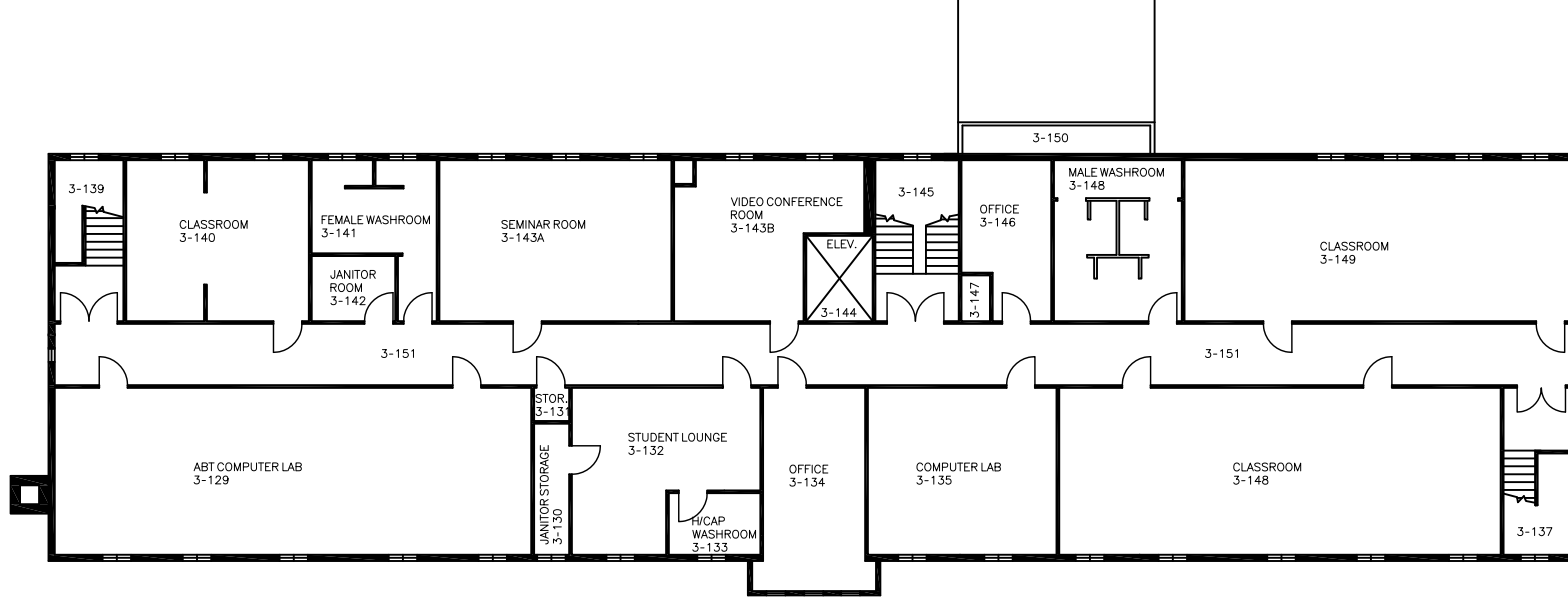


*PLEASE NOTE:
CONSTRUCTION OF THIS FACILITY IS SUBJECT TO THE
DISCRETION OF THE COLLEGE OF NECHAKO. THE
COLLEGE OF NECHAKO IS NOT RESPONSIBLE FOR ANY
DISCREPANCIES, ERRORS, AND OMISSIONS THAT MAY
OCCUR IN THE CONSTRUCTION OF THIS FACILITY. THE
COLLEGE OF NECHAKO IS NOT RESPONSIBLE FOR ANY
CONSTRUCTION COSTS THAT MAY EXCEED THE
BUDGETED COSTS. THE COLLEGE OF NECHAKO IS
NOT RESPONSIBLE FOR ANY DELAYS OR CANCELLATIONS
OF THIS FACILITY. THE COLLEGE OF NECHAKO IS
NOT RESPONSIBLE FOR ANY CHANGES TO THE
DESIGN OR CONSTRUCTION OF THIS FACILITY.
THE COLLEGE OF NECHAKO IS NOT RESPONSIBLE FOR
ANY COSTS THAT MAY EXCEED THE BUDGETED COSTS.
THE COLLEGE OF NECHAKO IS NOT RESPONSIBLE FOR
ANY DELAYS OR CANCELLATIONS OF THIS FACILITY.
THE COLLEGE OF NECHAKO IS NOT RESPONSIBLE FOR
ANY CHANGES TO THE DESIGN OR CONSTRUCTION OF
THIS FACILITY.



College of New Caledonia
 Facility Services, Room 2-332, 3330 - 22nd Avenue, Prince George, British Columbia
 Tel (250) 561-5821, Fax (250) 561-5865, Web www.cnc.bc.ca



PROJECT:	NECHAKO CAMPUS			
DWG. TITLE:	THIRD FLOOR PLAN			
REVISION NUMBER:	DR. BY:	TJM	AREA:	-
NO.:	01		SCALE:	NTS
SUPERCEDENTIAL REVISIONS:	DATE:	SEPT. 2013	SHEET:	3 OF 3
	LOCATION:	VANIERHOPE, BC		