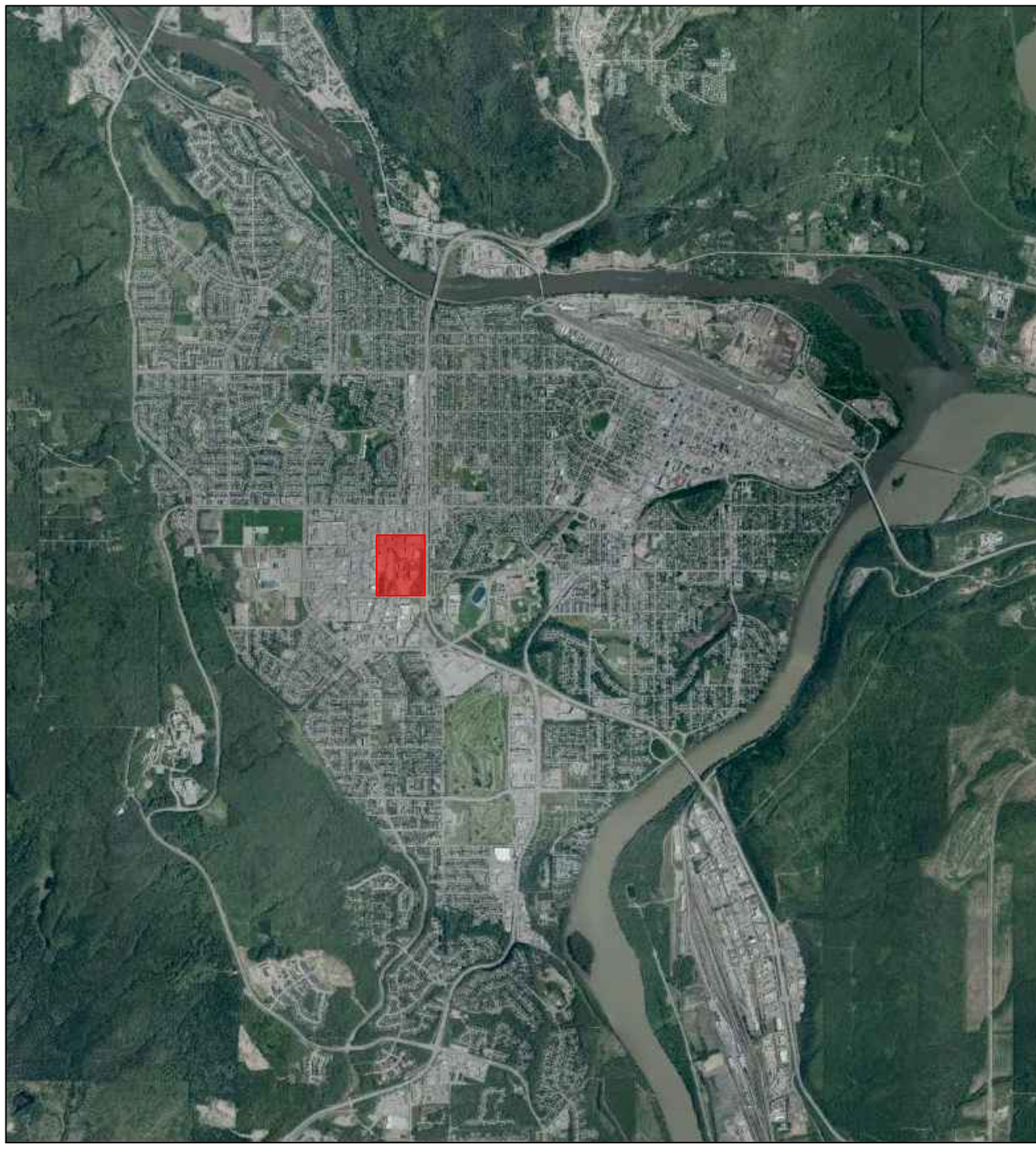
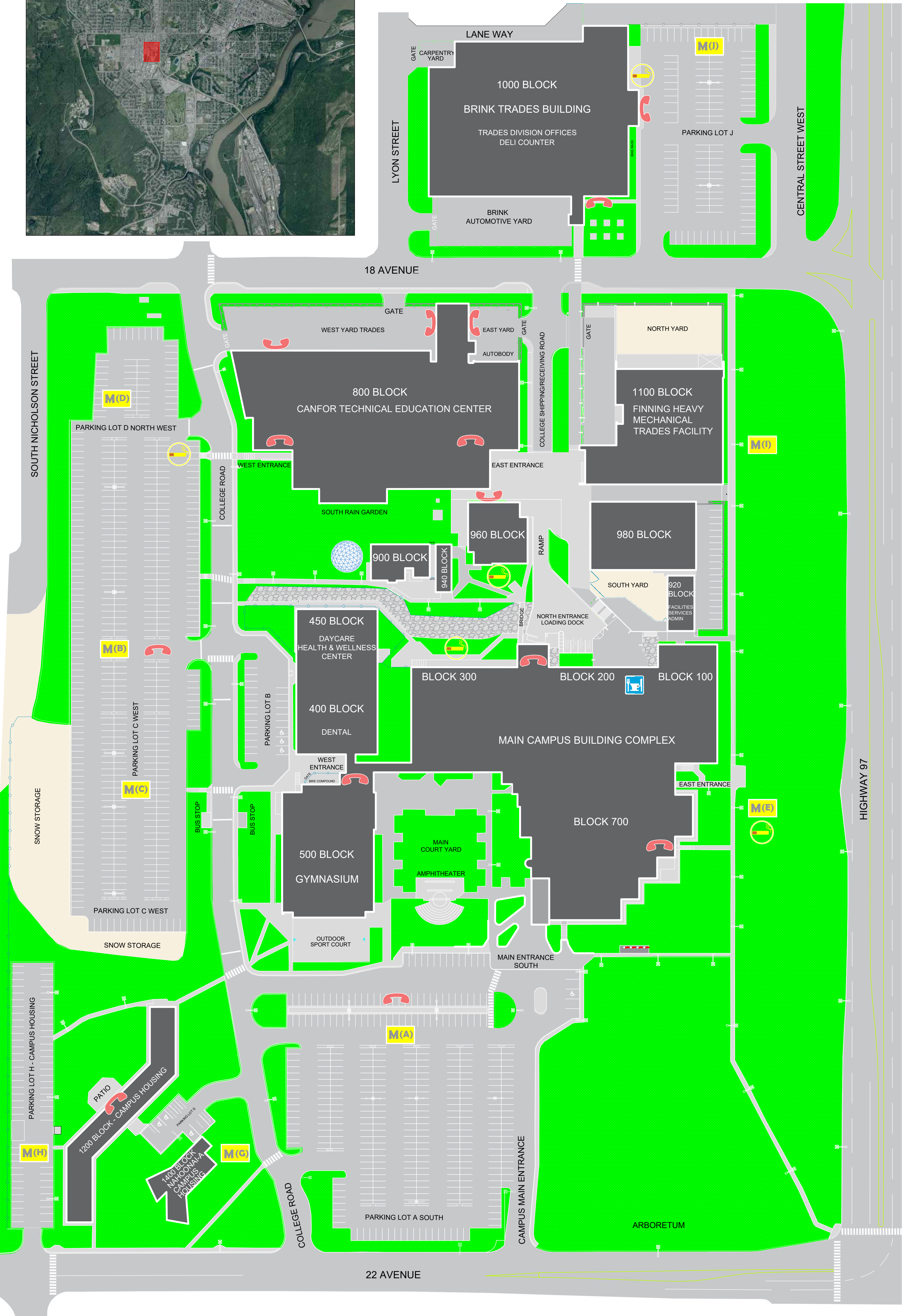
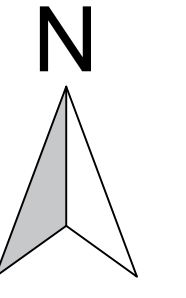


KEY PLAN



LEGEND

	MUSTER STATION - DESIGNATED EMERGENCY ASSEMBLY AREA		SMOKING AREA
	CAFETERIA OR FOOD SERVICE		EMERGENCY PHONE



College of New Caledonia

Facility Services, Room 2-332, 3330 - 22nd Avenue, Prince George, British Columbia
Tel (250) 561-5821, Fax (250) 561-5865, Web www.cnc.bc.ca

PROJECT: COLLEGE OF NEW CALEDONIA IN PRINCE GEORGE		SHEET NO.	
DWG. TITLE: CAMPUS SITE PLAN			
DR. BY:	ROOM NO.:	REVISION NO.:	REVISION TITLE:
NO.:	SCALE:	REVISION NO.:	REVISION TITLE:
DATE: APRIL, 2024	SHEET: OF:	REVISION NO.:	REVISION TITLE:
LOCATION: PRINCE GEORGE, BRITISH COLUMBIA			