



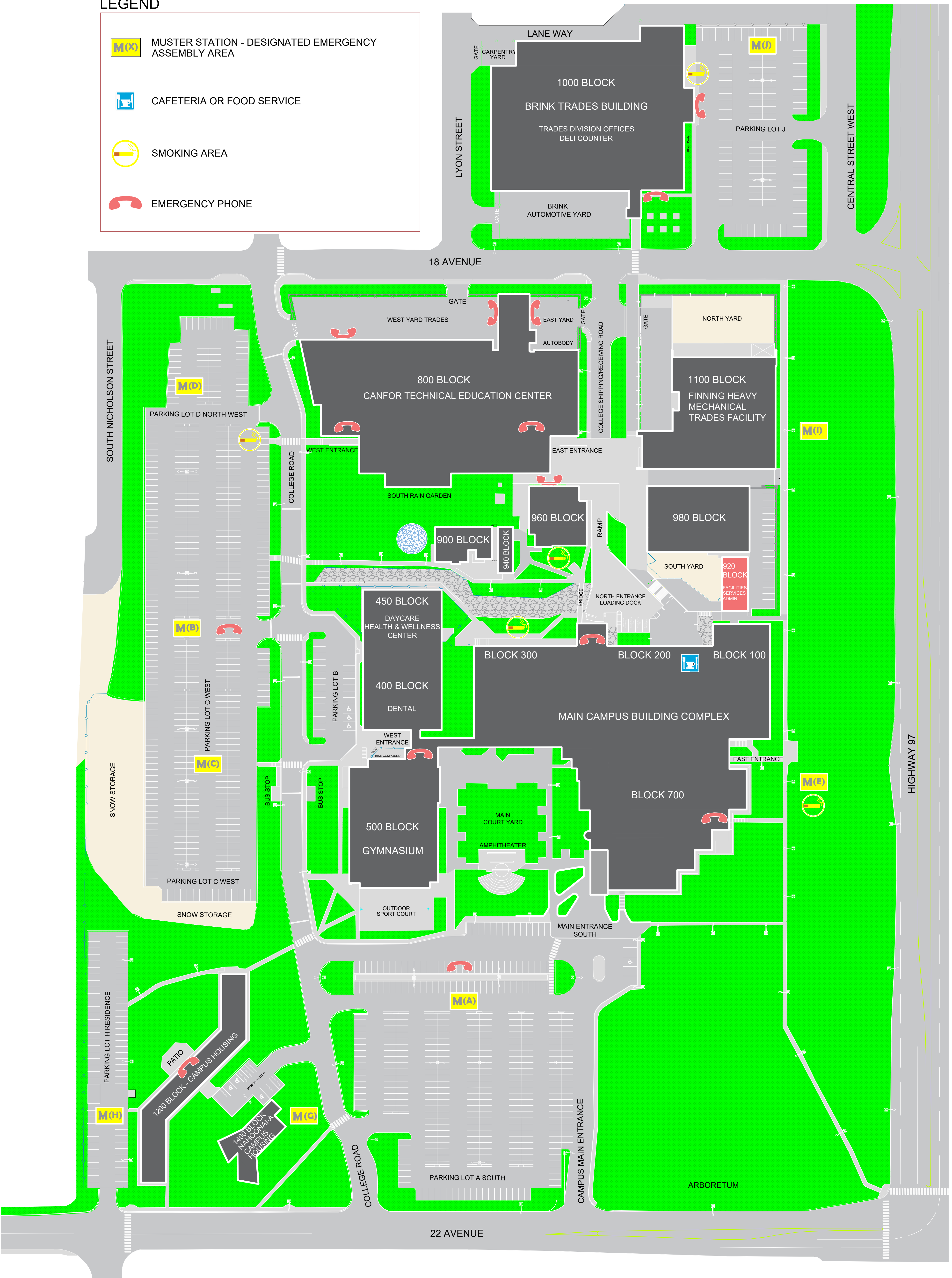


LEGEND

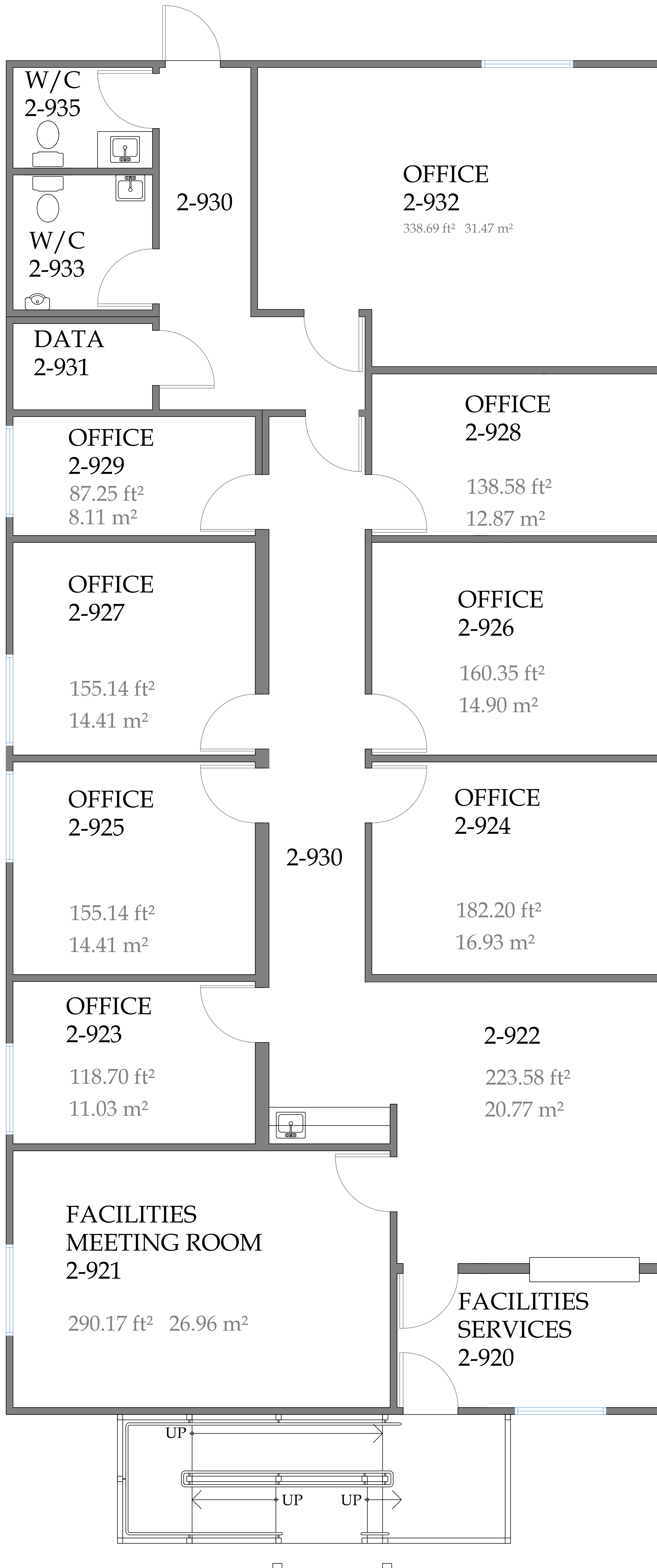
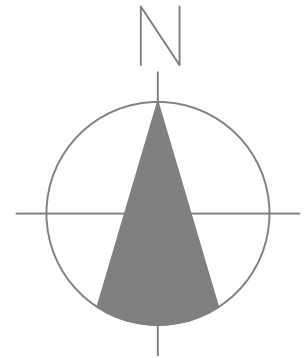
-  MUSTER STATION - DESIGNATED EMERGENCY ASSEMBLY AREA
-  CAFETERIA OR FOOD SERVICE
-  SMOKING AREA
-  EMERGENCY PHONE



College of New Caledonia

Facility Services, Room 2-332, 3330 - 22nd Avenue, Prince George, British Columbia
Tel (250) 561-5821, Fax (250) 561-5865, Web www.cnc.bc.ca

PROJECT: COLLEGE OF NEW CALEDONIA IN PRINCE GEORGE		SHEET NO.	
DWG. TITLE: CAMPUS SITE PLAN - 920 BLOCK			
DR. BY:	ROOM NO.:	REVISION NO.:	REVISION TITLE:
NO.:	SCALE:	REVISION NO.:	REVISION TITLE:
DATE: DEC, 2023	SHEET: OF:	REVISION NO.:	REVISION TITLE:
LOCATION: PRINCE GEORGE, BRITISH COLUMBIA			



College of New Caledonia

Facility Services, Room 2-332, 3330 - 22nd Avenue, Prince George, British Columbia
Tel (250) 561-5821, Fax (250) 561-5865, Web www.cnc.bc.ca

PROJECT:	COLLEGE OF NEW CALEDONIA IN PRINCE GEORGE			SHEET NO.
DWG. TITLE:	920 BLOCK			
DR. BY:	ROOM NO.:	REVISION NO.:	REVISION TITLE:	
NO.:	SCALE: NTS	REVISION NO.:	REVISION TITLE:	
DATE: NOV, 2023	SHEET: 1 OF: 1	REVISION NO.:	REVISION TITLE:	
LOCATION: PRINCE GEORGE, BRITISH COLUMBIA				