



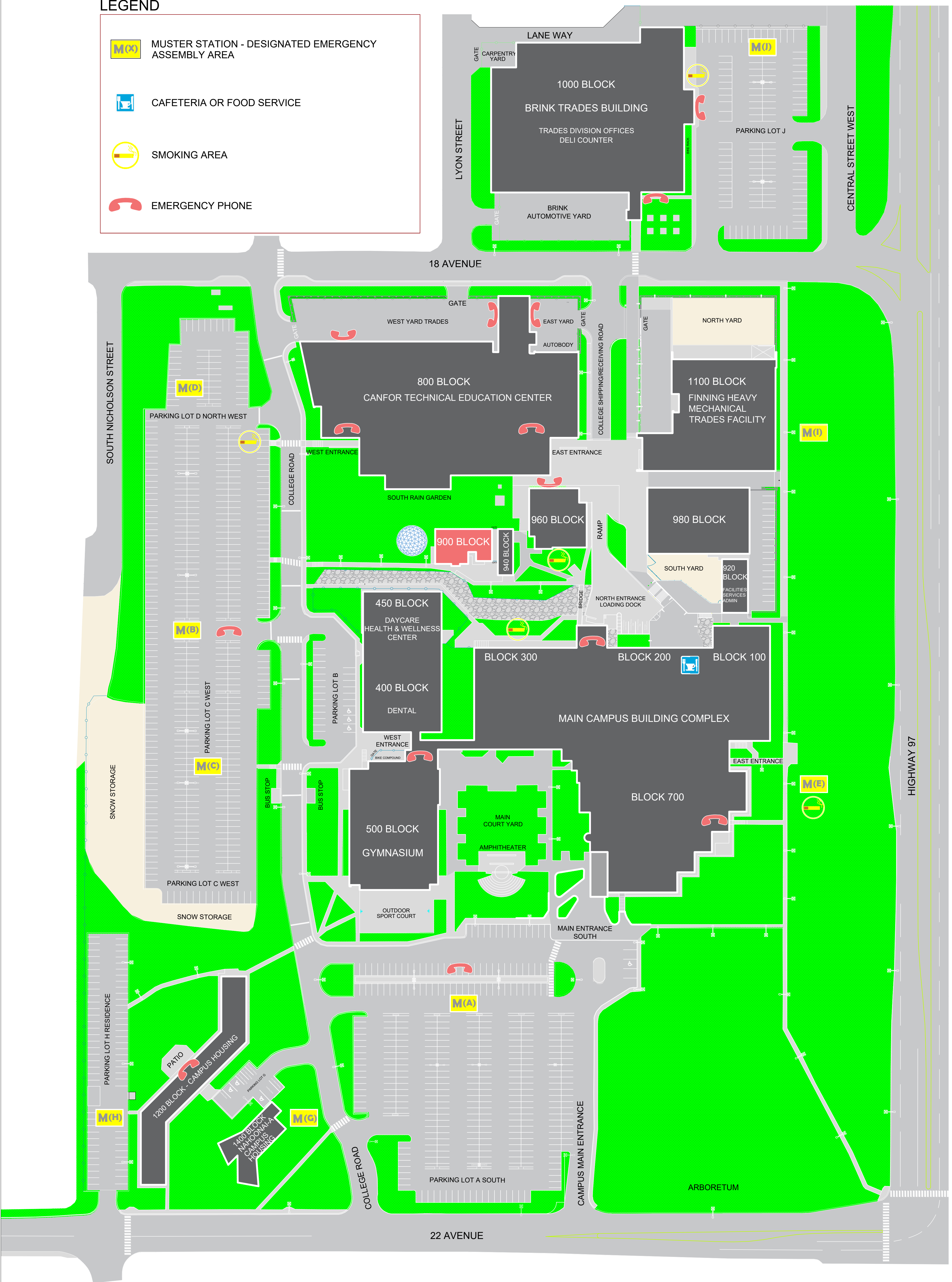


**LEGEND**

-  MUSTER STATION - DESIGNATED EMERGENCY ASSEMBLY AREA
-  CAFETERIA OR FOOD SERVICE
-  SMOKING AREA
-  EMERGENCY PHONE

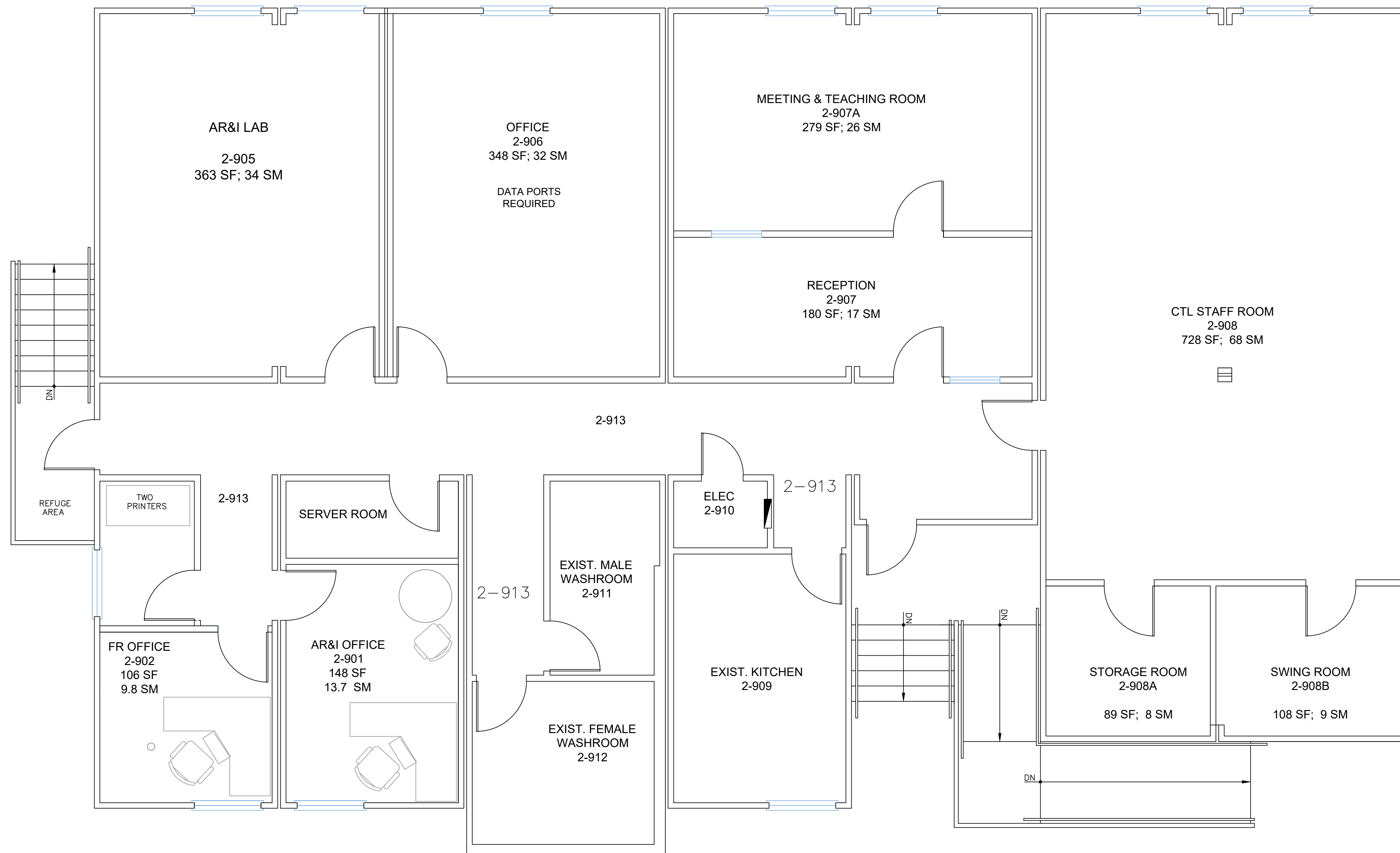
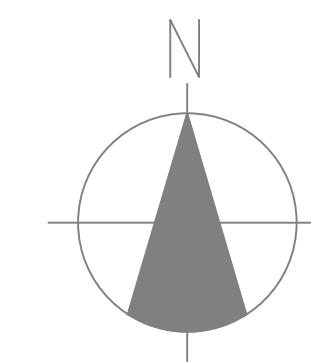


**College of New Caledonia**

Facility Services, Room 2-332, 3330 - 22nd Avenue, Prince George, British Columbia  
Tel (250) 561-5821, Fax (250) 561-5865, Web www.cnc.bc.ca

PROJECT: COLLEGE OF NEW CALEDONIA IN PRINCE GEORGE		SHEET NO.	
DWG. TITLE: CAMPUS SITE PLAN - 900 BLOCK			
DR. BY:	ROOM NO.:	REVISION NO.:	REVISION TITLE:
NO.:	SCALE:	REVISION NO.:	REVISION TITLE:
DATE: DEC, 2023	SHEET: OF:	REVISION NO.:	REVISION TITLE:
LOCATION: PRINCE GEORGE, BRITISH COLUMBIA			





**College of New Caledonia**

Facility Services, Room 2-332, 3330 - 22nd Avenue, Prince George, British Columbia  
Tel (250) 561-5821, Fax (250) 561-5865, Web www.cnc.bc.ca

PROJECT: COLLEGE OF NEW CALEDONIA IN PRINCE GEORGE	
DWG. TITLE: 900 BLOCK	
DR. BY:	ROOM NO:
NO.:	SCALE: NTS
DATE: DEC 2022	SHEET: 1 OF 1
LOCATION: PRINCE GEORGE, BC	

Note:	

SHEET NO.
<b>A-01</b>