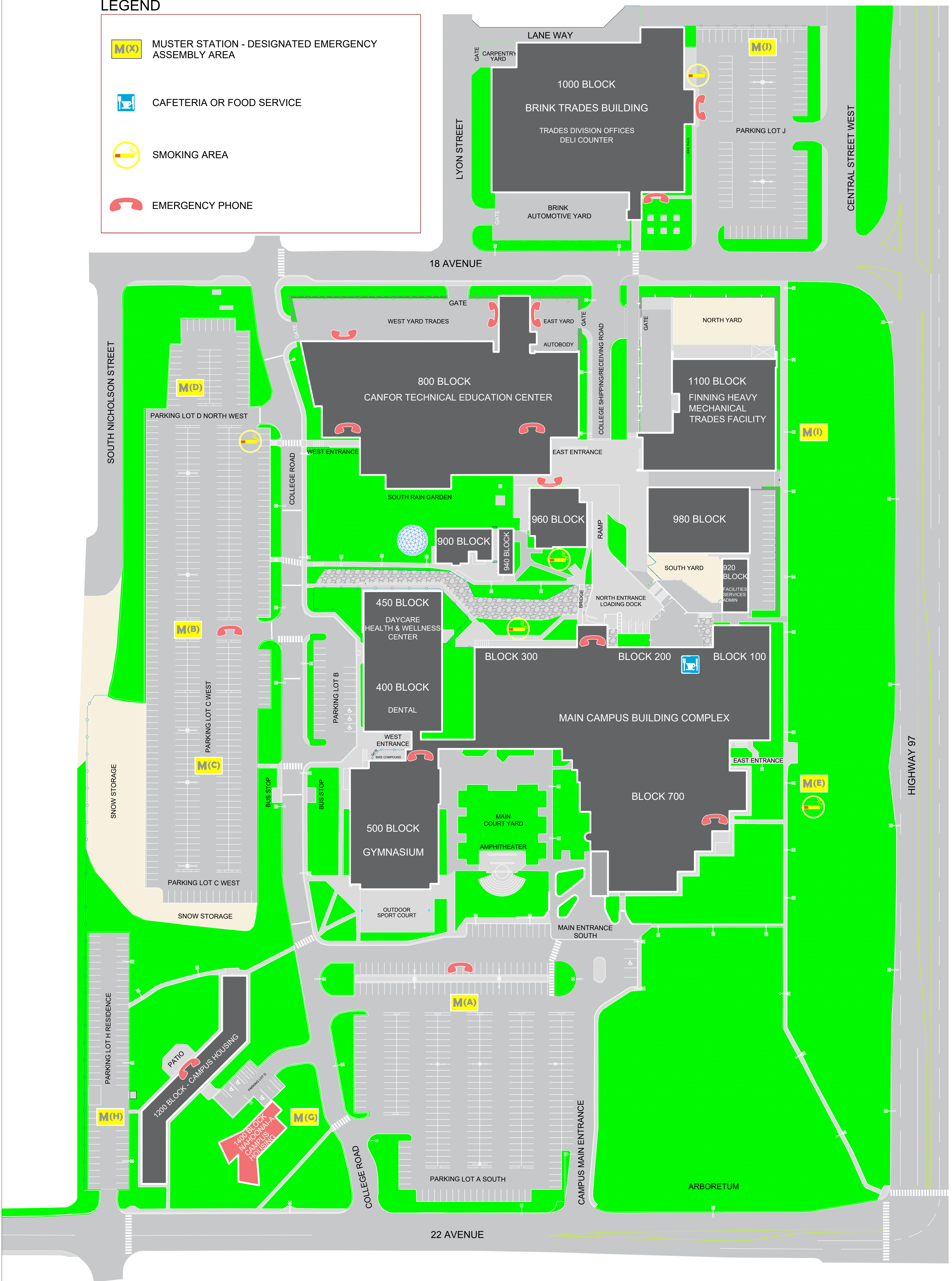


LEGEND

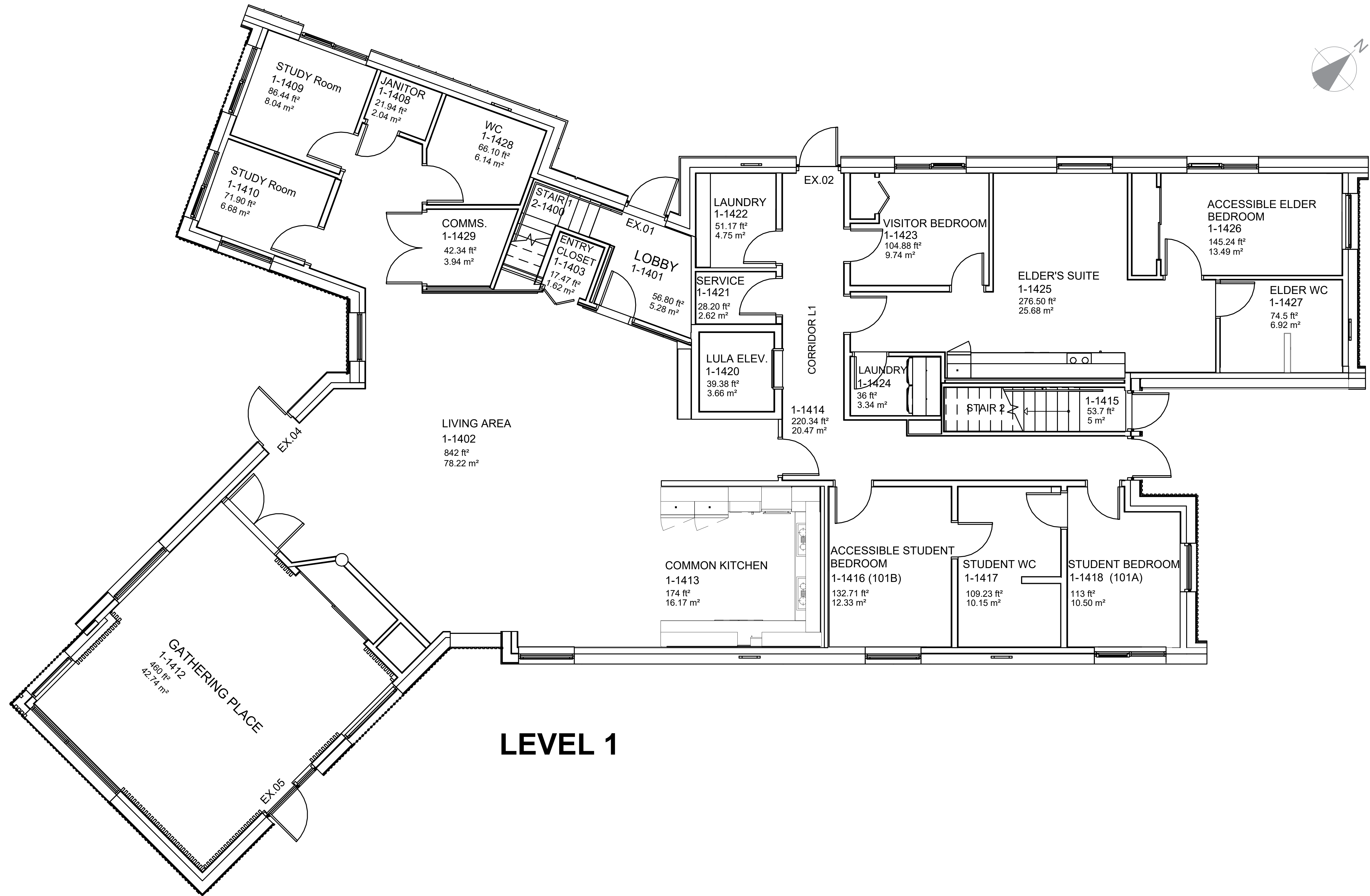
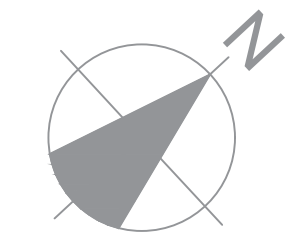
	MUSTER STATION - DESIGNATED EMERGENCY ASSEMBLY AREA
	CAFETERIA OR FOOD SERVICE
	SMOKING AREA
	EMERGENCY PHONE



College of New Caledonia

Facility Services, Room 2-332, 3330 - 22nd Avenue, Prince George, British Columbia
Tel (250) 561-5821, Fax (250) 561-5865, Web www.cnc.bc.ca

PROJECT: COLLEGE OF NEW CALEDONIA IN PRINCE GEORGE		SHEET NO.	
DWG. TITLE: CAMPUS SITE PLAN - 1400 BLOCK			
DR. BY:	ROOM NO.:	REVISION NO.:	REVISION TITLE:
NO.:	SCALE:	REVISION NO.:	REVISION TITLE:
DATE: DEC, 2023	SHEET: OF:	REVISION NO.:	REVISION TITLE:
LOCATION: PRINCE GEORGE, BRITISH COLUMBIA			



LEVEL 1



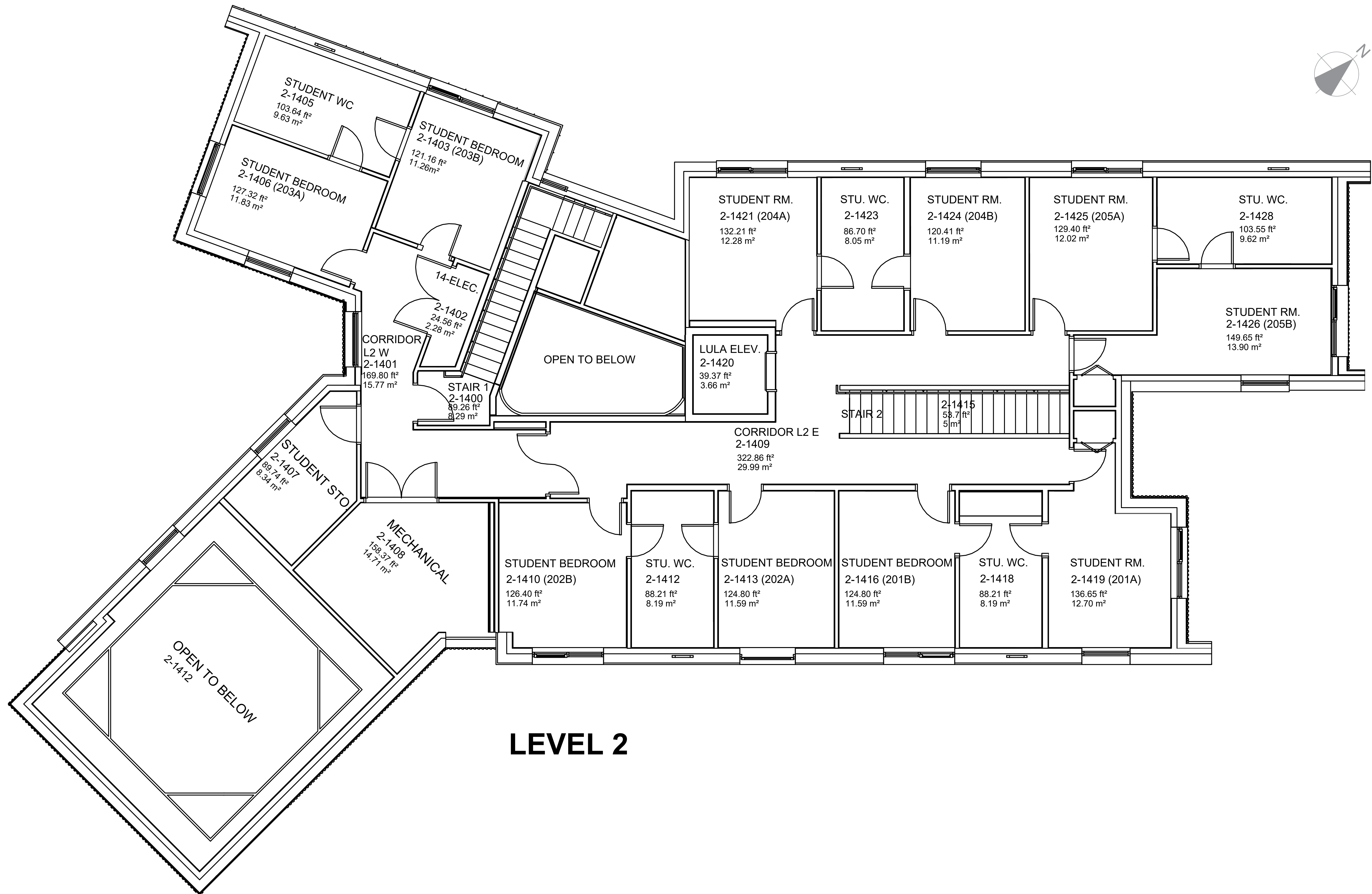
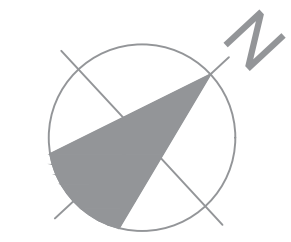
College of New Caledonia

Facility Services, Room 2-332, 3330 - 22nd Avenue, Prince George, British Columbia
Tel (250) 561-5821, Fax (250) 561-5865, Web www.cnc.bc.ca

PROJECT: COLLEGE OF NEW CALEDONIA IN PRINCE GEORGE			
DWG. TITLE: NAHOONAI-A CAMPUS HOUSING (1400 BLOCK) - LEVEL 1			
DR. BY:	ROOM NO.:	REVISION NO.:	REVISION TITLE:
NO.:	SCALE: NTS	REVISION NO.:	REVISION TITLE:
DATE: APRIL, 2024	SHEET: 1 OF: 2	REVISION NO.:	REVISION TITLE:
LOCATION: PRINCE GEORGE, BRITISH COLUMBIA			

Note:	

SHEET NO.
A-01



College of New Caledonia

Facility Services, Room 2-332, 3330 - 22nd Avenue, Prince George, British Columbia
Tel (250) 561-5821, Fax (250) 561-5865, Web www.cnc.bc.ca

PROJECT: COLLEGE OF NEW CALEDONIA IN PRINCE GEORGE			
DWG. TITLE: NAHOONAI-A CAMPUS HOUSING (1400 BLOCK) - LEVEL 2			
DR. BY:	ROOM NO:	REVISION NO:	REVISION TITLE:
NO.:	SCALE: NTS	REVISION NO:	REVISION TITLE:
DATE: APRIL, 2024	SHEET: 2 OF: 2	REVISION NO:	REVISION TITLE:
LOCATION: PRINCE GEORGE, BRITISH COLUMBIA			

Note:	

SHEET NO.
A-02