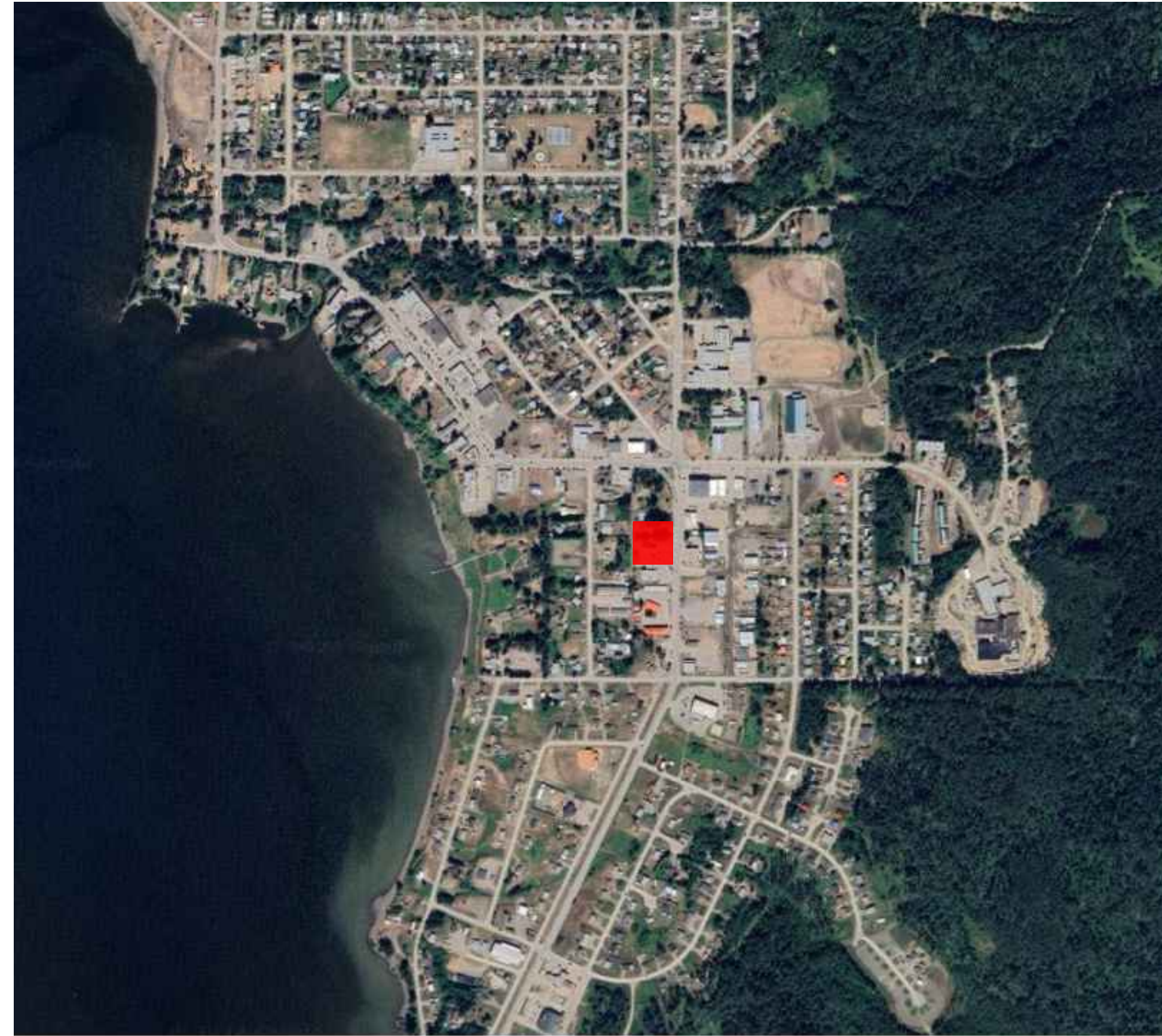



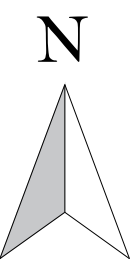


KEY PLAN



LEGEND

-  MUSTER STATION
DESIGNATED EMERGENCY ASSEMBLY AREA
-  SMOKING AREA
-  STUDENT AND STAFF KITCHEN

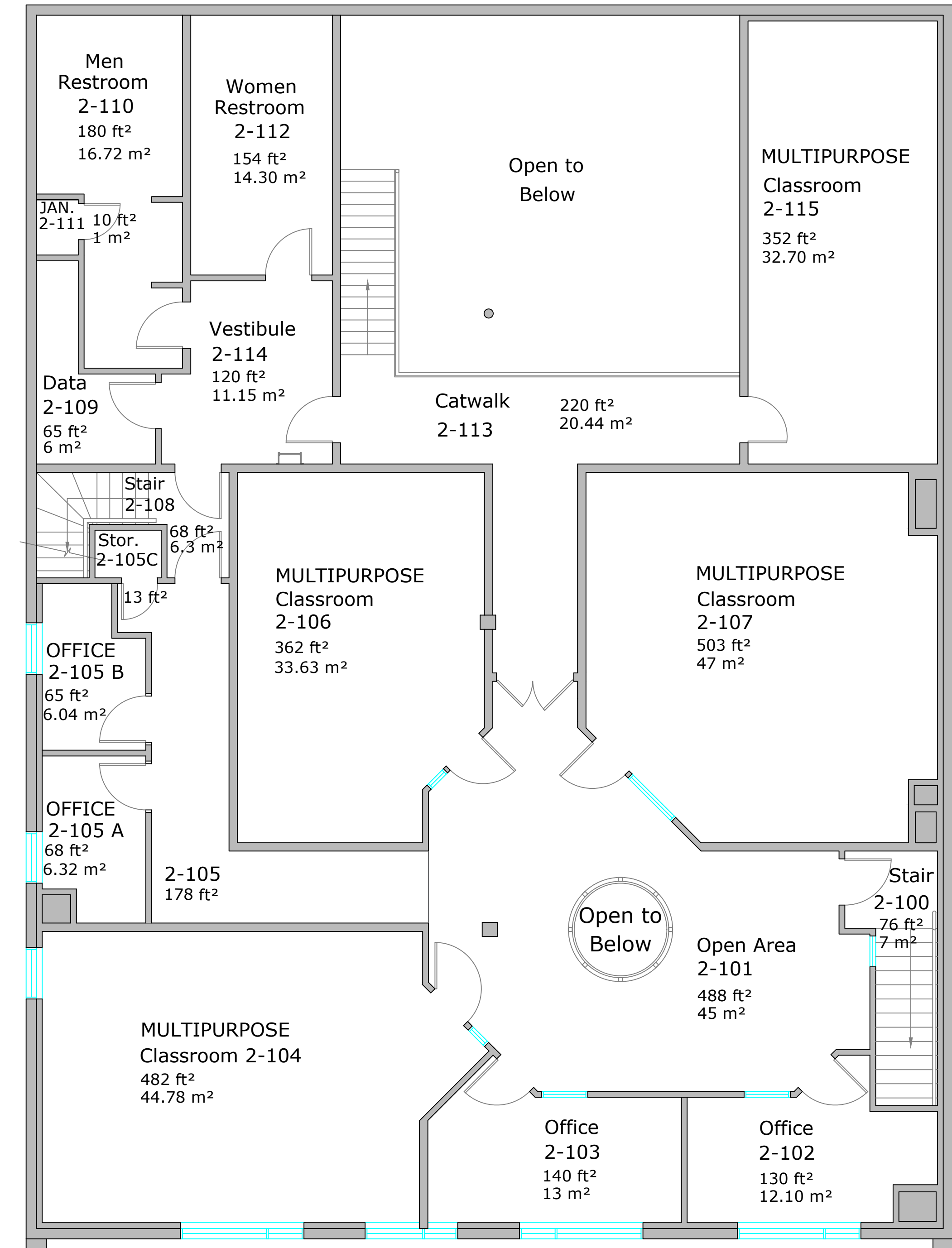
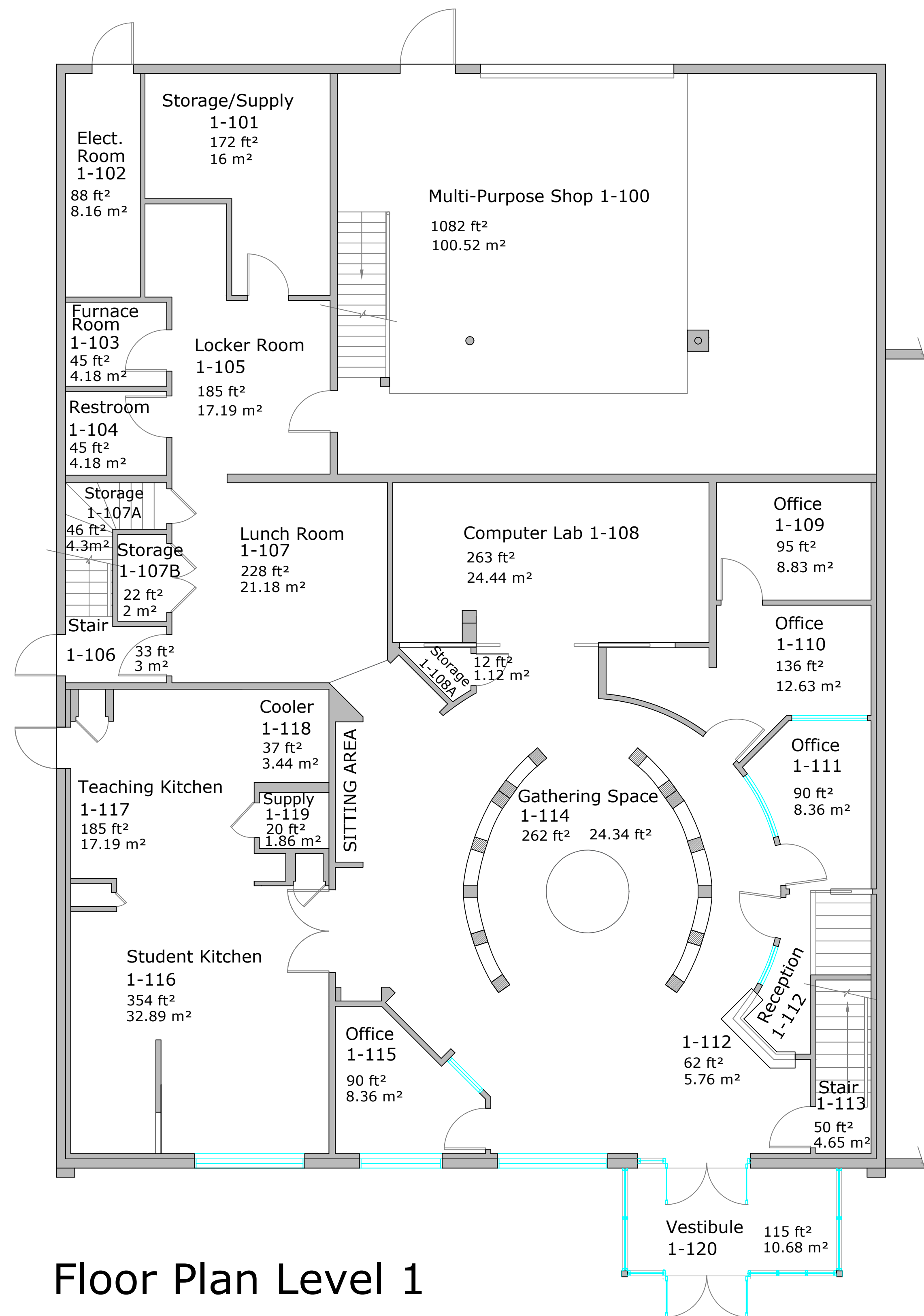


College of New Caledonia

Facility Services, Room 2-332, 3330 - 22nd Avenue, Prince George, British Columbia
Tel (250) 561-5821, Fax (250) 561-5865, Web www.cnc.bc.ca

PROJECT: CNC FORT ST. JAMES CAMPUS			
DWG. TITLE: SITE PLAN			
DR. BY:	ROOM NO.:	REVISION NO.:	REVISION TITLE:
NO.:	SCALE:	REVISION NO.:	REVISION TITLE:
DATE: JULY 2024	SHEET: OF:	REVISION NO.:	REVISION TITLE:
LOCATION: BURNS LAKE, BRITISH COLUMBIA			

SHEET NO.



College of New Caledonia

Facility Services, Room 2-332, 3330 - 22nd Avenue, Prince George, British Columbia
Tel (250) 561-5821, Fax (250) 561-5865, Web www.cnc.bc.ca

PROJECT: College OF NEW CALEDONIA IN FORT ST. JAMES			
DWG. TITLE: Fort St. James Building - Floor Plan Level 1 & 2			
DR. BY:	ROOM NO:	REVISION NO:	REVISION TITLE:
NO.:	SCALE: NTS	REVISION NO:	REVISION TITLE:
DATE: OCT, 2023	SHEET: 1 OF: 1	REVISION NO:	REVISION TITLE:
LOCATION:			

Note: