


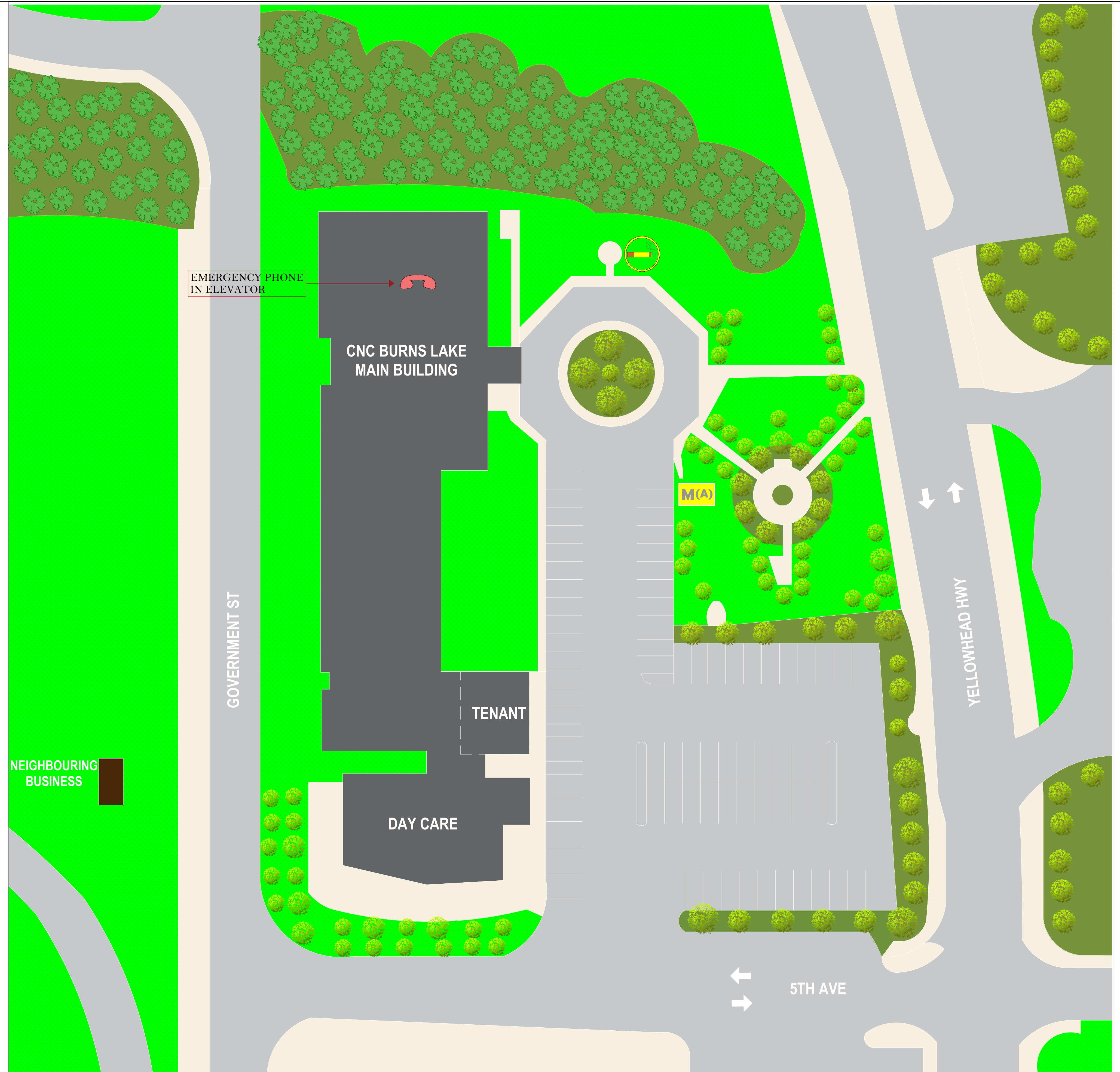


KEY PLAN



LEGEND

	MUSTER STATION DESIGNATED EMERGENCY ASSEMBLY AREA
	EMERGENCY PHONE
	SMOKING AREA

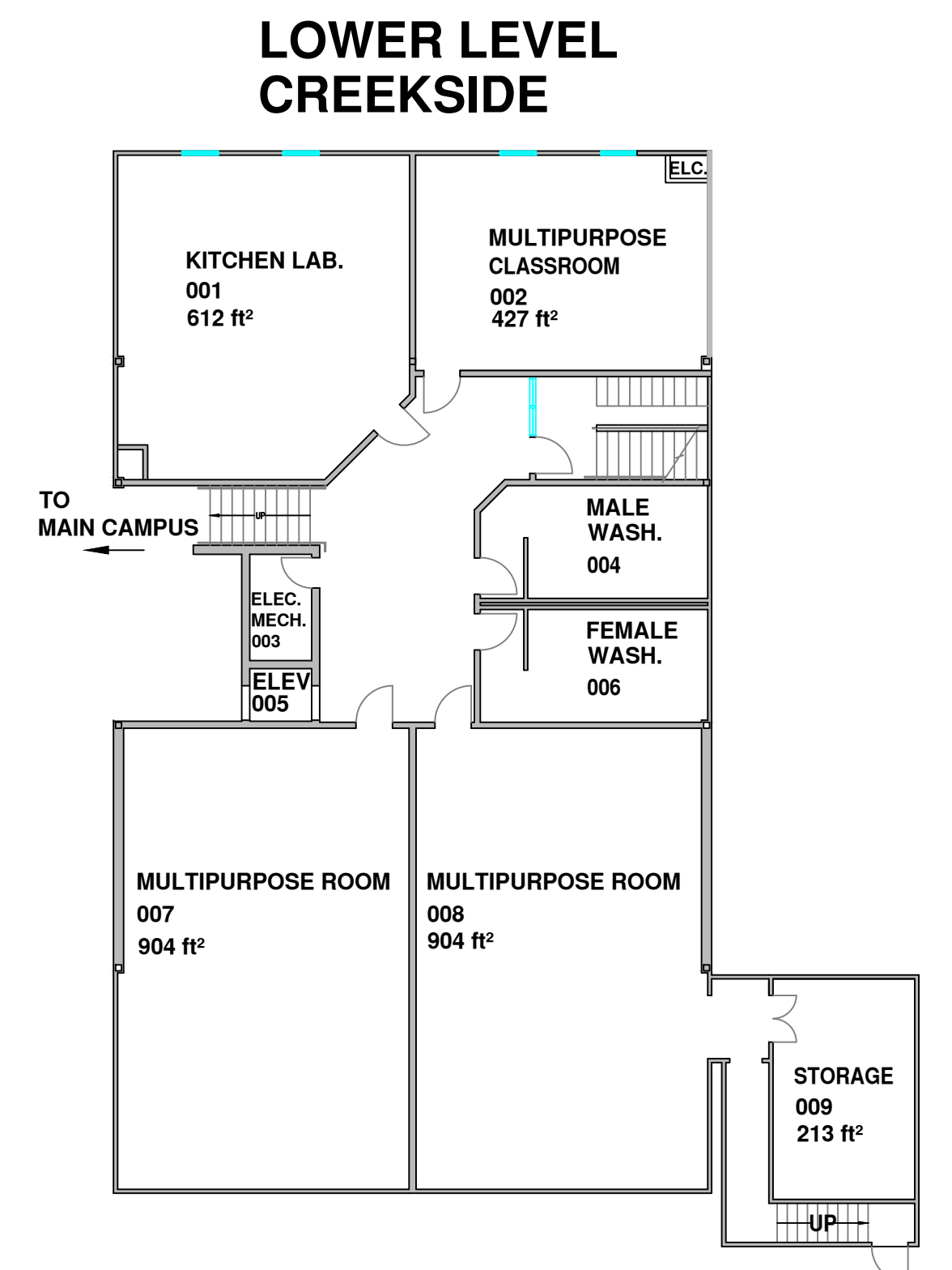
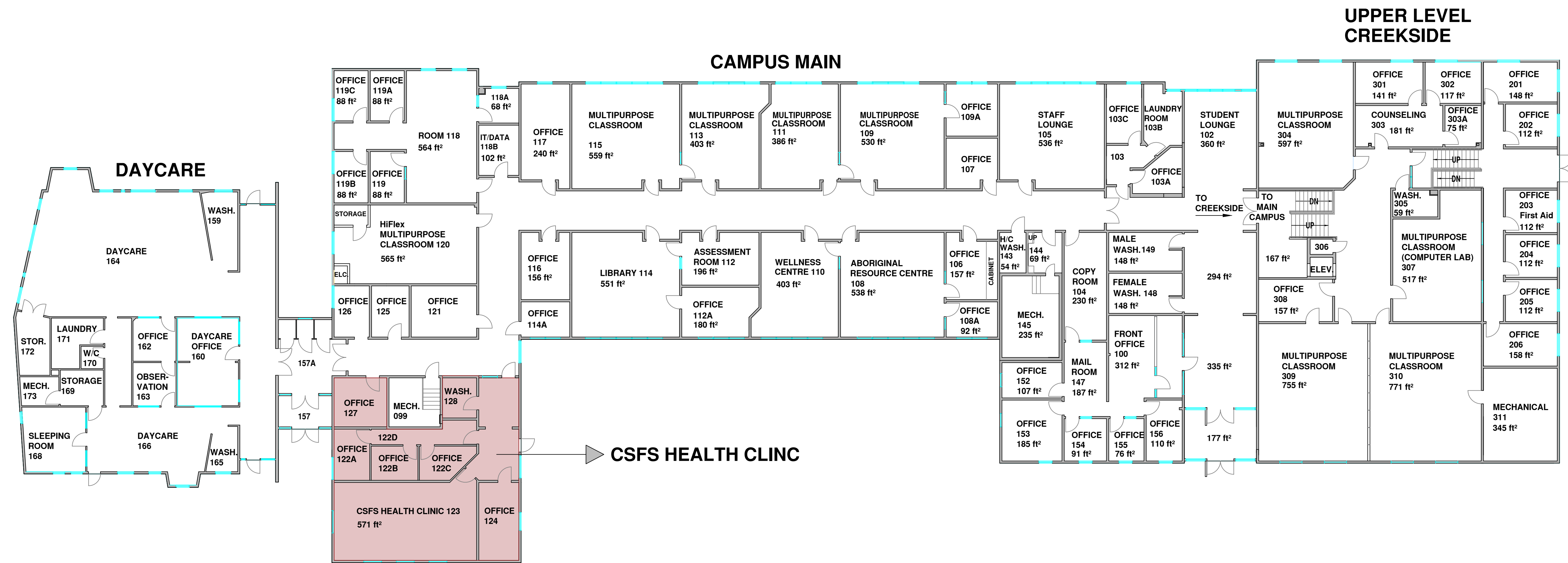


College of New Caledonia

Facility Services, Room 2-332, 3330 - 22nd Avenue, Prince George, British Columbia
Tel (250) 561-5821, Fax (250) 561-5865, Web www.cnc.bc.ca

PROJECT: CNC BURNS LAKE CAMPUS			
DWG. TITLE: SITE PLAN			
DR. BY:	ROOM NO.:	REVISION NO.:	REVISION TITLE:
NO.:	SCALE:	REVISION NO.:	REVISION TITLE:
DATE: JULY 2024	SHEET: OF:	REVISION NO.:	REVISION TITLE:
LOCATION: BURNS LAKE, BRITISH COLUMBIA			

SHEET NO.



College of New Caledonia

Facility Services, Room 2-332, 3330 - 22nd Avenue, Prince George, British Columbia
Tel (250) 561-5821, Fax (250) 561-5865, Web www.cnc.bc.ca

PROJECT: COLLEGE OF NEW CALEDONIA IN LAKES DISTRICT			
DWG. TITLE: LAKES DISTRICT BUILDING - LEVEL 1 & 2			
DR. BY:	ROOM NO:	REVISION NO:	REVISION TITLE:
NO.:	SCALE: NTS	REVISION NO:	REVISION TITLE:
DATE: JULY, 2024	SHEET: 1 OF: 1	REVISION NO:	REVISION TITLE:
LOCATION: PRINCE GEORGE, BRITISH COLUMBIA			

Note:

SHEET NO.

A-01