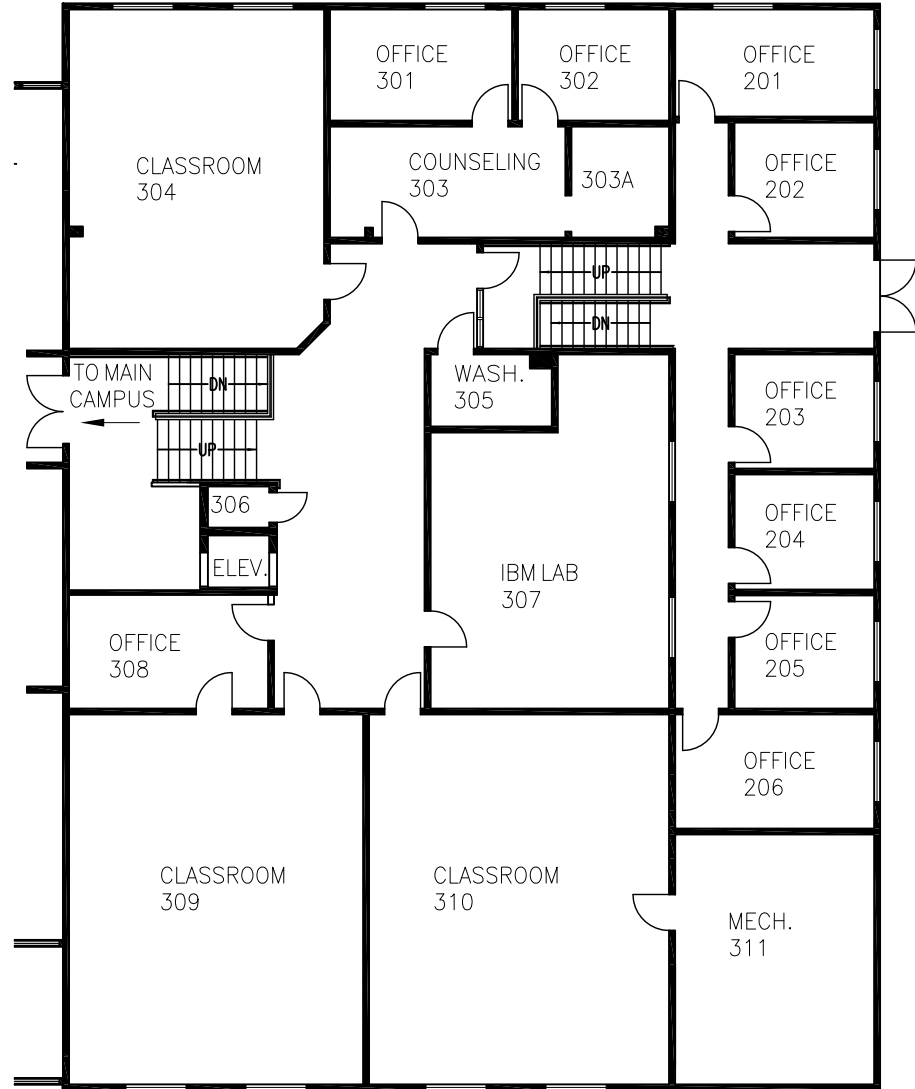


**LOWER LEVEL
CREEKSIDE**



**UPPER LEVEL
CREEKSIDE**

*PLEASE NOTE:
CORRECTED PER
DISCREPANCIES, ERRORS, AND
CALCULATIONS. ALL RIGHTS RESERVED.
CNC FACILITY SERVICES FOR CORRECTION,
BRITISH COLUMBIA
PRECEDENCE OVER SCALED DIMENSIONS
PLAN IN FORCE FOR ALL WORK
THE WRITTEN PERMISSION OF CNC
FACILITY SERVICES.



College of New Caledonia

Facility Services, Room 2-332, 3330 - 22nd Avenue, Prince George, British Columbia
Tel (250) 561-5821, Fax (250) 561-5865, Web www.cnc.bc.ca

PROJECT:	LAKES DISTRICT CAMPUS
DWG. TITLE:	CREEKSIDE CAMPUS
REVISION NUMBER:	DR. BY: T.M. VIEW AREA: -
NO.:	SCALE: 1/16" = 1'-0"
DATE:	SEPT. 2013 SHEET: 1 OF: -
SUPERCEDING ALL PREVIOUS REVISIONS	LOCATION: FORT ST. JAMES, BC